

KITCHEN  
FURNITURE

milo  
KITCHENS

FEATURING

THE **i6**  
MEASURING SYSTEM

LET'S GET  
STARTED

UNIQUE  
FEATURES



ORGANIZATION  
SYSTEMS



YOUR  
STYLE



BESPOKE CABINET FURNITURE  
TO SUIT YOUR LIFESTYLE



## DRAWER AND ROLLOUT SYSTEMS



floating cabinet  
example shown

**SUPERIORLINE Drawer Systems** are thoughtfully designed, adding sleekness and originality to any cabinet.

Impressively slim drawer sides make the most of available storage space and access.

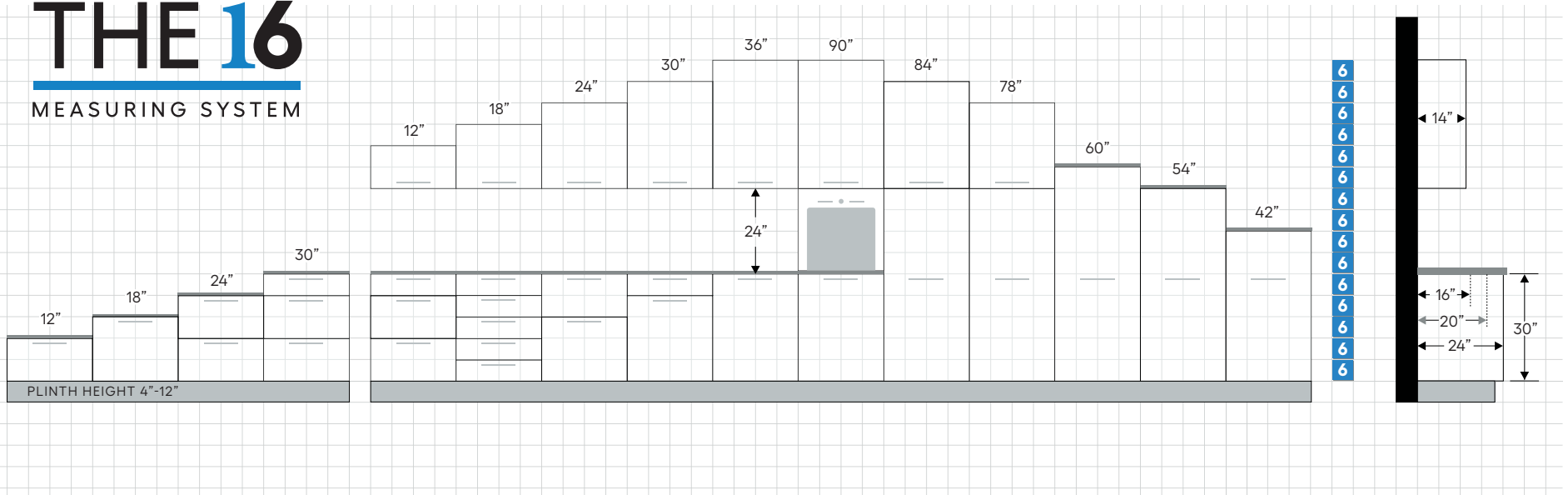
**milo**  
KITCHENS

# SIMPLE MEASUREMENTS

# MILO'S UNITS OF MEASURE FOR SIMPLE EFFICIENT PLANNING



## THE **i6** MEASURING SYSTEM

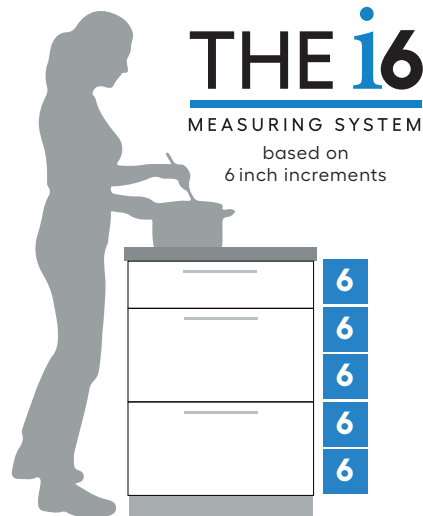


### Clean Lines - Easy to Configure

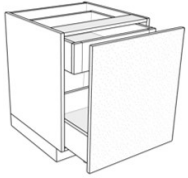
The i6 Grid Based System gives you a simple, easy to use guide where the widths, heights and most fronts are divisible by 6". This is very helpful in creating your perfect kitchen layout.

### Planning Made Easy

- Milo Kitchens provides:
- 4 base unit heights
  - 6 tall unit heights
  - 5 wall unit heights



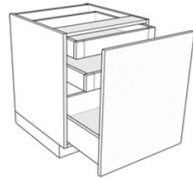
**milo**  
KITCHENS



1 DRAWER 1 ROLLOUT

**BAZ**

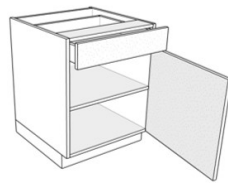
↔ 12/16/18/20/24  
 ↑ 30  
 ↘ 24/20



1 DRAWER 2 ROLLOUT

**BAY**

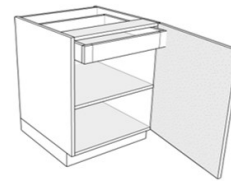
↔ 12/16/18/20/24  
 ↑ 30  
 ↘ 24/20



1 DRAWER

**BAX**

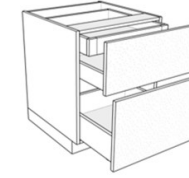
↔ 12/16/18/20/24  
 ↑ 30  
 ↘ 24/20/16



1 ROLLOUT

**BAW**

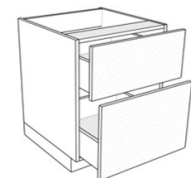
↔ 12/16/18/20/24  
 ↑ 30  
 ↘ 24/20



2 DRAWER 1 ROLLOUT

**BAV**

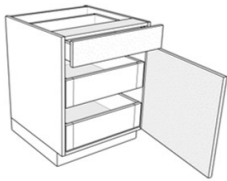
↔ 12/16/18/20/24/32/36/40/48  
 ↑ 30  
 ↘ 24/20



2 DRAWER

**BAU**

↔ 12/16/18/20/24/32/36/40/48  
 ↑ 30  
 ↘ 24/20



1 DRAWER 2 ROLLOUT

**BAT**

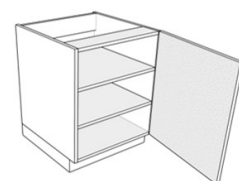
↔ 16/18/20/24  
 ↑ 30  
 ↘ 24/20/16



OPEN SHELF

**BAS**

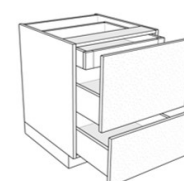
↔ 6/8/10/12/14/16/18/20/22/24  
 ↑ 30  
 ↘ 24/16



2 SHELF

**BAR**

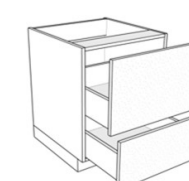
↔ 12/14/16/18/20/24  
 ↑ 30  
 ↘ 24/20/16



2 DRAWER 1 ROLLOUT

**BAQ**

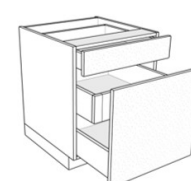
↔ 12/16/18/20/24/32/36/40/48  
 ↑ 30  
 ↘ 24/20



2 DRAWER

**BAP**

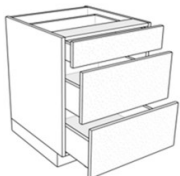
↔ 12/16/18/20/24/32/36/40/48  
 ↑ 30  
 ↘ 24/20



2 DRAWER 1 ROLLOUT

**BAO**

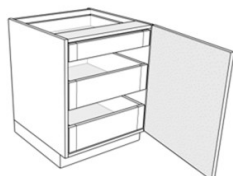
↔ 12/16/18/20/24/32/36/40/48  
 ↑ 30  
 ↘ 24/20



3 DRAWER

**BAN**

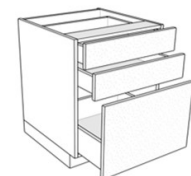
↔ 12/16/18/20/24/32/36/40/48  
 ↑ 30  
 ↘ 24/20/16



3 ROLLOUT

**BAM**

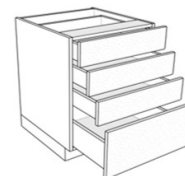
↔ 16/18/20/24  
 ↑ 30  
 ↘ 24/20/16



3 DRAWER

**BAL**

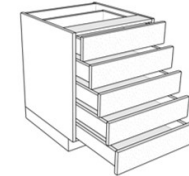
↔ 12/16/18/20/24/32/36/40/48  
 ↑ 30  
 ↘ 24/20/16



4 DRAWER

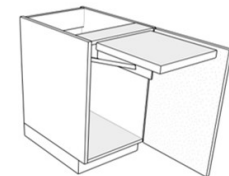
**BAK**

↔ 12/16/18/20/24/32/36/40/48  
 ↑ 30  
 ↘ 24/20/16



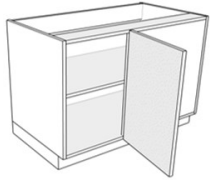
**BAJ**

↔ 12/16/18/20/24/32/36/40/48  
 ↑ 30  
 ↘ 24/20

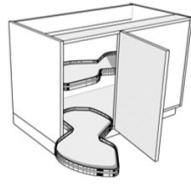


**BAI**

↔ 17.5/20.5  
 ↑ 30  
 ↘ 24

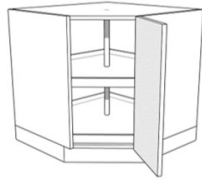


BLIND CORNER

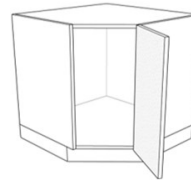


CORNER BLIND - LEMANS

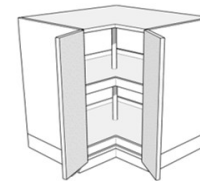
44" -BAHL BAHR 46"-BXL BXR



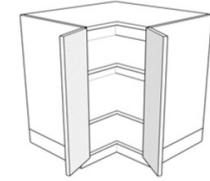
45 CORNER SUSAN



45 CORNER NO SHELF



90 CORNER SUSAN



90 CORNER

**BAGL BAGR**

**48"-BWL BWR**

**BAF**

**BAE**

**BAC**

**BAB**

↔	44/46/48
↑↓	30
↙	24/20

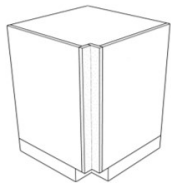
↔	44/46/48
↑↓	30
↙	24

↔	30
↑↓	24
↙	24

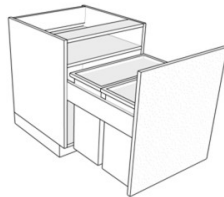
↔	30
↑↓	24
↙	24

↔	32/36
↑↓	30
↙	24

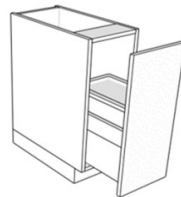
↔	32/36
↑↓	30
↙	24



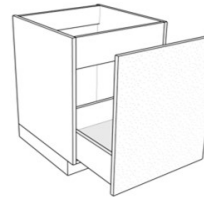
90 CORNER FILLER



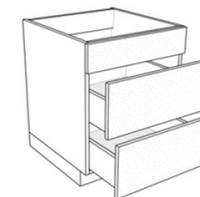
DOUBLE TRASH 1 SHELF



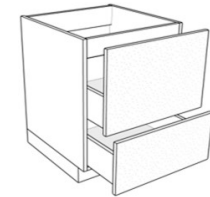
SINGLE TRASH



SINK 1 DRAWER



SINK 2 DRAWER



SINK 2 DRAWER

**BX**

**BAA**

**BYH**

**SBA**

**SBB**

**SBC**

↔	32/36
↑↓	30
↙	24

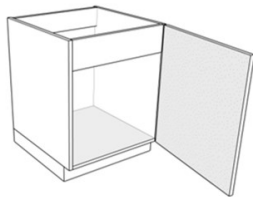
↔	21/24
↑↓	30
↙	24

↔	15/18
↑↓	30
↙	24

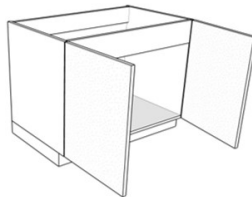
↔	16/18/24
↑↓	30
↙	24

↔	24/32/36/40/48
↑↓	30
↙	24

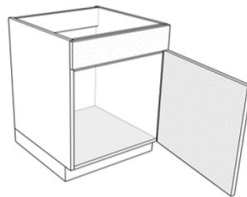
↔	24/32/36/40/48
↑↓	30
↙	24



SINK



SINK



SINK



DISHWASHER PANEL

**SBD**

**SBE**

**SBF**

**SBG**

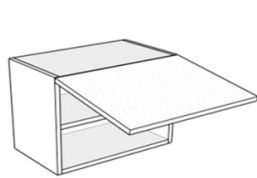
↔	18/20/24
↑↓	30
↙	24/20

↔	32/36/40/48
↑↓	30
↙	24/20

↔	18/20/24
↑↓	30
↙	24/20

↔	24
↑↓	30 (act 29.875")
↙	24

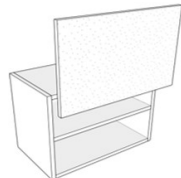




SINGLE DOOR HK LIFT

**WAZ**

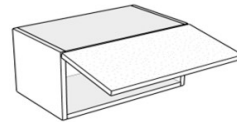
↔ 18/20/24/32/36/40/48  
 ↑↓ 18  
 ↙ 14



SINGLE DOOR HL LIFT

**WAE**

↔ 18/20/24/32/36/40/48  
 ↑↓ 18  
 ↙ 14



SINGLE DOOR HK LIFT

**WAM**

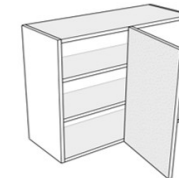
↔ 12/16/18/20/24/32/36/40/48  
 ↑↓ 12  
 ↙ 14



DOUBLE DOOR HF LIFT

**WAU**

↔ 18/20/24/30/36/40/48\*  
 ↑↓ 24/36  
 ↙ 14



CORNER BLIND

**WAX**

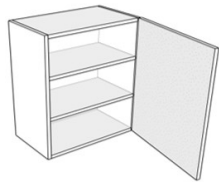
↔ 32/36  
 ↑↓ 24/30/36  
 ↙ 14



OPEN SHELF

**WAW**

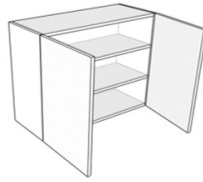
↔ 6/8/10/12/14/16/18/20/22/24  
 ↑↓ 12/18/24/30/36  
 ↙ 14



SINGLE DOOR

**WAV**

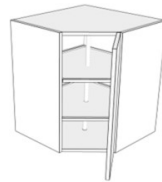
↔ 12/14/16/18/20/24  
 ↑↓ 18/24/30/36  
 ↙ 14



DOUBLE DOOR

**WAT**

↔ 32/36/40  
 ↑↓ 18/24/30/36  
 ↙ 14



45 CORNER SUSAN

**WAS**

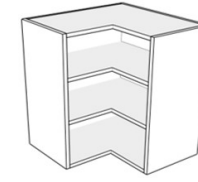
↔ 24  
 ↑↓ 24/30/36  
 ↙ 14



BOTTLE RACK

**WAA/WAB/WAQ**

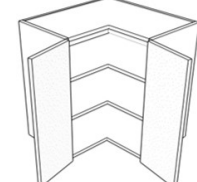
↔ 6  
 ↑↓ 24/30/36  
 ↙ 14



OPEN CORNER SHELF

**WAP**

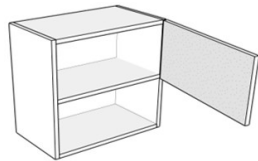
↔ 24/26  
 ↑↓ 24/30/36  
 ↙ 14



DOUBLE DOOR CORNER

**WAO**

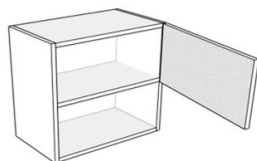
↔ 26/32/36  
 ↑↓ 24/30/36  
 ↙ 14



SINGLE DOOR MICRO & BEZEL BLANK

**WAN**

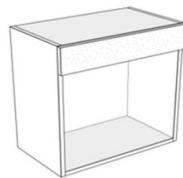
↔ 24  
 ↑↓ 30/36  
 ↙ 20



SINGLE DOOR MICRO & BEZEL BLANK

**WAD**

↔ 30  
 ↑↓ 30/36  
 ↙ 20

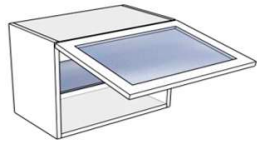


FIXED PANEL TOP MICRO & BEZEL BLANK

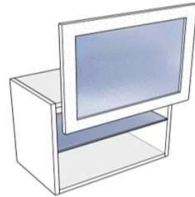
**WAC**

↔ 24/30  
 ↑↓ 24  
 ↙ 20

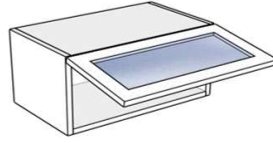
\*24" HT ONLY



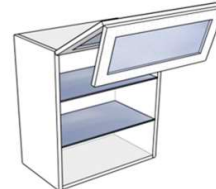
SINGLE DOOR HK LIFT



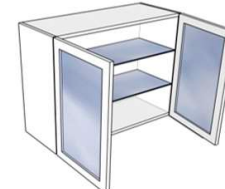
SINGLE DOOR HL LIFT



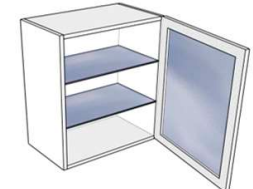
SINGLE DOOR HK LIFT



DOUBLE DOOR HF LIFT

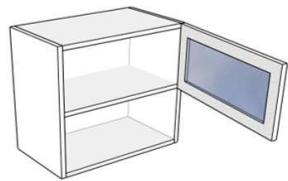


DOUBLE DOOR



SINGLE DOOR

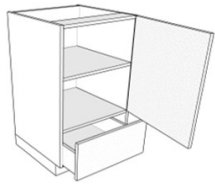
WAL		WAL		WAF		WAH		WAI		WAJ	
↔	18/20/24/32/36/40/48	↔	18/20/24/32/36/40/48	↔	18/20/24/32/36/40/48	↔	18/20/24/30/36/40/48*	↔	32/36/40/48	↔	16/18/20/24
↑↓	18	↑↓	18	↑↓	12	↑↓	24/36	↑↓	24/30/36	↑↓	24/30/36
↙	14	↙	14	↙	14	↙	14	↙	14	↙	14



SINGLE DOOR MICRO & BEZEL BLANK

WAG	
↔	24
↑↓	30/36
↙	20

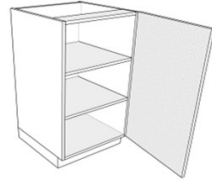
\*24" HT ONLY



1 DRAWER

**LAZ**

↔	12/16/18/20/24	↔
↑↓	42	↑↓
↙	24/20/14	↙



2 SHELF

**LAY**

↔	12/16/18/20/24	↔
↑↓	42	↑↓
↙	24/20	↙



OPEN SHELF

**LAX**

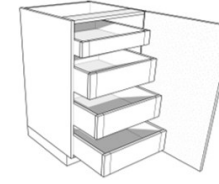
↔	8/10/12/14/16/18/20/22/24	↔
↑↓	42	↑↓
↙	24	↙



4 DRAWER

**LAW**

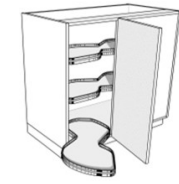
↔	12/16/18/20/24	↔
↑↓	42	↑↓
↙	24/20	↙



4 ROLLOUT

**LAV**

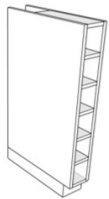
↔	16/18/20/24	↔
↑↓	42	↑↓
↙	24/20/14	↙



CORNER BLIND LEMANS

**LAO**

↔	44/46/48	↔
↑↓	42	↑↓
↙	24	↙



BOTTLE RACK

**LAU**

↔	6
↑↓	42
↙	24



3 DRAWER

LAT



3 SHELF

LAS



4 ROLLOUT

LAR



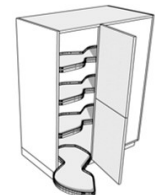
OPEN SHELF

LAQ



BOTTLE RACK

LAP



CORNER BLIND LEMANS

LAN

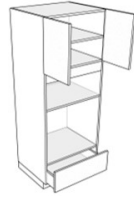
↔	12/16/18/20/24	↔	12/16/18/20/24	↔	16/18/20/24	↔	8/10/12/14/16/18/20/22/24	↔	6	↔	44/46/48
↑↓	54/60	↑↓	54/60	↑↓	54/60	↑↓	54/60	↑↓	54/60	↑↓	54/60
↙	24/20	↙	24/20/14	↙	24/20	↙	24	↙	24	↙	24



OPEN SHELF

**LAM**

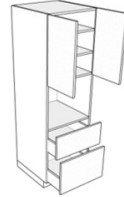
↔ 8/10/12/14/16/18/20/22/24 ↔  
 ↓ 78/84/90  
 ↙ 24



APPLIANCE OVEN/MICRO

**AAZ**

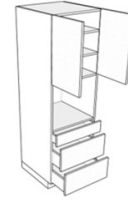
↔ 30 ↔  
 ↓ 78/84/90  
 ↙ 24



APPLIANCE OVEN/MICRO

**AAZ**

↔ 30 ↔  
 ↓ 78/84/90  
 ↙ 24



APPLIANCE OVEN/MICRO

**AAZ**

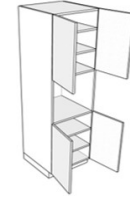
↔ 30 ↔  
 ↓ 78/84/90  
 ↙ 24



APPLIANCE OVEN/MICRO

**AAW**

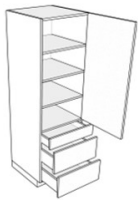
↔ 30 ↔  
 ↓ 78/84/90  
 ↙ 24



APPLIANCE OVEN/MICRO

**AAV**

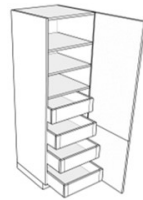
↔ 30 ↔  
 ↓ 78/84/90  
 ↙ 24



3 DRAWER

**LAL**

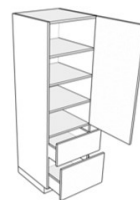
↔ 12/16/18/20/24 ↔  
 ↓ 78/84/90  
 ↙ 24



4 ROLLOUT

**LAK**

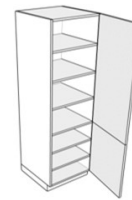
↔ 16/18/20/24 ↔  
 ↓ 78/84/90  
 ↙ 24



2 DRAWER

**LAL**

↔ 12/16/18/20/24 ↔  
 ↓ 78/84/90  
 ↙ 24



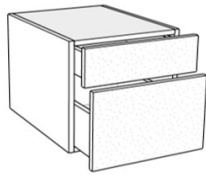
6 SHELF

**LAL**

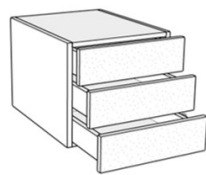
↔ 12/16/18/20/24 ↔  
 ↓ 78/84/90  
 ↙ 24



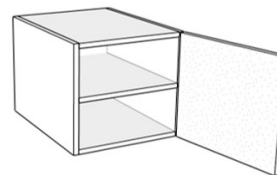
1 DRAWER 1 ROLLOUT



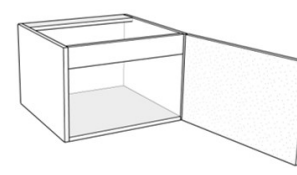
2 DRAWER



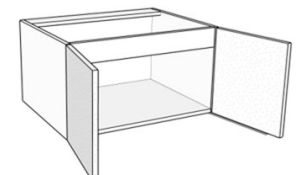
3 DRAWER



1 DOOR

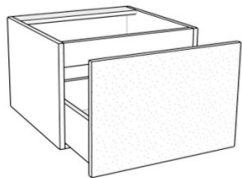


SINK 1 DOOR

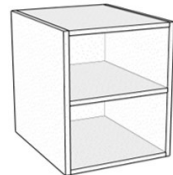


SINK 2 DOOR

	FAZ	FAY	FAW	FAV	FAU	FAS
↔	12/15/18	↔ 12/15/18	↔ 12/15/18	↔ 12/15/18	↔ 24	↔ 30/36
↑↓	18	↑↓ 18	↑↓ 18	↑↓ 18	↑↓ 18	↑↓ 18
↙	22	↙ 22	↙ 22	↙ 22	↙ 22	↙ 22

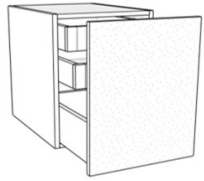


SINK 1 DRAWER

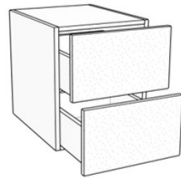


OPEN SHELF

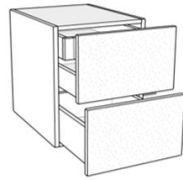
	FAR	FAH
↔	24/30/36	↔ 12/15/18
↑↓	18	↑↓ 18
↙	22	↙ 22



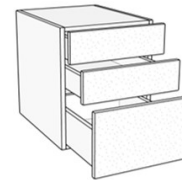
1 DRAWER 2 ROLLOUT



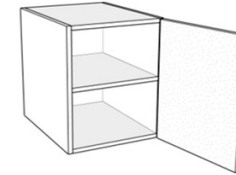
2 DRAWER



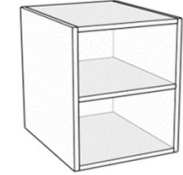
2 DRAWER 1 ROLLOUT



3 DRAWER

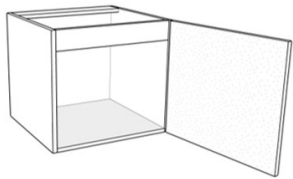


1 DOOR

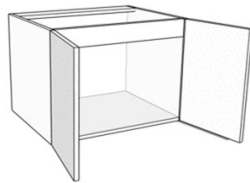


OPEN SHELF

	FAQ	FAP	FAO	FAN	FAM	FAL
↔	12/15/18	↔ 12/15/18	↔ 12/15/18	↔ 12/15/18	↔ 12/15/18	↔ 12/15/18
↑↓	24	↑↓ 24	↑↓ 24	↑↓ 24	↑↓ 24	↑↓ 24
↙	22	↙ 22	↙ 22	↙ 22	↙ 22	↙ 22



SINK 1 DOOR



SINK 2 DOOR

	FAK	FAJ
↔	24	↔ 30/36
↑↓	24	↑↓ 24
↙	22	↙ 22



PANTRY 24" UPPER DOOR

PANTRY 24" UPPER DOOR

PANTRY 30" LOWER DOOR

PANTRY 30" LOWER DOOR

	FAF	FAE	FAD	FAC
↔	15/18/24	↔ 15/18/24	↔ 15/18/24	↔ 15/18/24
↕	78	↕ 84/90	↕ 78	↕ 84/90
↙	23	↙ 23	↙ 23	↙ 23



# milo

KITCHENS

American Made

FEATURING

## THE i6

MEASURING SYSTEM

KITCHEN  
FURNITURE

MILO KITCHENS  
USA

PHONE 928-800-7730

9172 E. FLORENTINE RD #4  
PRESCOTT VALLEY  
ARIZONA 86314